



Berkshire Symphony

Ronald Feldman, director

****Program****

Giovanni Gabrieli
(1554/57 – 1612)

Canzon á 12

Johannes Brahms
(1833 – 1897)

Piano concerto No. 1 in D Minor op. 15

I. *Maestoso*

II. *Adagio*

III. *Rondo, Allegro non troppo*

Simone Dinnerstein, piano

****intermission****

Ludwig van Beethoven
(1770 – 1827)

Symphony No. 7 in A Major, op. 92

I. *Poco sostenuto; Vivace*

II. *Allegretto*

III. *Presto; Assai meno presto*

IV. *Finale; Allegro con brio*

Friday, October 23, 2015

8:00 p.m.

Chapin Hall

Williamstown, Massachusetts

*No photography or recording without permission.
Please turn off or mute cell phones, audible pagers, etc.*

See music.williams.edu for full details and additional happenings as well as to sign up for the weekly e-newsletters.

Upcoming Events

Sat Oct 24	8pm	Zambezi Marimba Band - Family Days Concert	Chapin Hall
Sun Oct 25	3pm	CANCELED Orrin Evans, jazz piano - Visiting Artist Series	Brooks-Rogers Recital Hall
Tue Oct 27	4:15pm	Faculty Talk with Prof. Corinna Campbell	Bernhard, room 30
Wed Oct 28	12:15pm	MIDWEEKMUSIC "In C" by Terry Riley	Chapin Hall, stage
Sun Nov 1	3pm	Faculty Recital: Matthew M. Marsit, clarinet	Brooks-Rogers Recital Hall
Wed Nov 4	12:15pm	MIDWEEKMUSIC	Chapin Hall, stage
Thu Nov 5	2:35pm	Composition Reading Voxare String Quartet - Visiting Artist Series	Brooks-Rogers Recital Hall
Thu Nov 5	4:15pm	Master Class Chamber Music Voxare String Quartet	Brooks-Rogers Recital Hall
Thu Nov 5	8pm	Voxare String Quartet - Visiting Artist Series	Brooks-Rogers Recital Hall
Fri Nov 6	4:15pm	Faculty Talk with Prof. Jennifer Bloxam	Bernhard, room 30
Fri Nov 6	8pm	Faculty Recital: Joanna Kurkiewicz, violin and Doris Stevenson, piano	Brooks-Rogers Recital Hall
Sat Nov 7	4pm	Master Class: Cappella Pratensis - Visiting Artist Series	Thompson Memorial Chapel
Sat Nov 7	8pm	Cappella Pratensis - Visiting Artist Series	Thompson Memorial Chapel
Wed Nov 11	12:15pm	MIDWEEKMUSIC in the Chapel	Thompson Memorial Chapel
Wed Nov 11	8pm	Marc-André Hamelin, piano - Visiting Artist Series	Chapin Hall
Thu Nov 12	4:15pm	Prof. Ingrid Monson, Class of 1960 Lecture	Bernhard, room 30

Next Berkshire Symphony Concerts:

Fri Nov 20	8pm	Berkshire Symphony, featuring Mark Peskanov, violin	Chapin Hall
Fri Mar 4	8pm	Berkshire Symphony	Chapin Hall
Sat Mar 5	2pm	Berkshire Symphony Family Concert	Chapin Hall
Fri Apr 22	8pm	Berkshire Symphony Soloists Gala	Chapin Hall

All in Chapin Hall, 8:00pm with pre-concert talk at 7:15pm in Brooks-Rogers

Berkshire Symphony Personnel

Violin I

Joel Pitchon, *concertmaster*
 Scott Daniel '17,
asst. concertmaster
 Sarah Briggs
 Hanna Goodrick '18
 Katherine Hrach '16
 Samuel Lang '19
 Mandela Namaste '19
 Cindy Ogulnick
 Kaori Washiyama

Violin II

Joana Genova, *principal*
 Ouisa Fohrhaltz
 Joseph Jewett
 Min Kim '17
 Sophie Lu '19
 Abigail Miller '19
 Morris Reeves '18
 Abigail Soloway '18
 Harriet Welther

Viola

Ah Ling Neu, *principal*
 James Bergin
 Leo Goldmakher
 Catherine Hall-Schor
 Aria Kim '19
 Bing Liu
 Delaney Smith '18
 Dawn Wu '18
 Sophie Wunderlich '18
 Lauren Yu '16

Cello

Nathaniel Parke, *principal*
 Stephanie Caridad '18
 Patricia Ho '16
 Richard Mickey
 Perri Morris
 David Ogulnick

Double Bass

Robert Zimmerman, *principal*
 Chris Janson '16
 Gregory Mora '18
 Steve Moran
 Patrick O'Connell

Flute

Jacqueline DeVoe, *principal*
 Calvin Ludwig '18
 Tiffany Sun '18

Oboe

Carl Jenkins, *principal*
 Mollie Bernstein '18
 Samantha Stone '17

Clarinet

Susan Martula, *principal*
 Wei Luo '18

Bassoon

Stephen Walt, *principal*
 Nathaniel Vilas '17

Horn

Victor Sungarian, *principal*
 Jessica Lascoe
 Christopher Wayland '16
 Collin Williams '18

Trumpet

David Wharton, *principal*
 Paul Heggeseth
 Leonard Bopp '19
 Eric Hirsch '19
 Daniel Fisher '19
 James Miotto '18

Trombone

John Wheeler, *principal*
 David Lee '19
 Matthew Luhn

Timpani

Matthew Gold, *principal*

Orchestra Manager

Jenny Dewar

Librarian

Lisa Liu '16

Teaching Assistant

Claire Leyden '16

Stage Managers

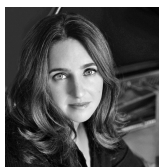
Michael Navarette '16
 Angie Sun '17
 Tiffany Sun '18
 Yi-Tong Tseo '17

] = principal on Brahms



Ronald Feldman, director

Since joining the Boston Symphony Orchestra's cello section at the age of 19, Ronald Feldman has received critical acclaim for a wide variety of musical achievements. Increasingly in demand as a conductor, Mr. Feldman was appointed assistant to Boston Pops conductor John Williams in 1989, a position he held until 1993. As conductor Mr. Feldman has appeared with the Rochester Philharmonic, the Quebec Symphony, the Springfield Symphony, the Saint Louis Symphony, the George Enescu Chamber Orchestra, the National Symphony of Costa Rica, the Landmarks Orchestra, and the London Symphony Orchestra. Mr. Feldman has appeared as cello soloist with many orchestras performing a wide range of concerto repertoire from Dvorak to Ligeti. His many chamber music affiliations have included performances with the Boston Symphony Chamber Players, Collage New Music Ensemble, the Boston Conservatory Chamber Players, and the Williams Chamber Players. His performances include collaborations with artists Emanuel Ax, Garrick Ohlsson, Gil Shaham, Christian Tetzlaff, and Yo-Yo Ma. He is on the faculties of Williams College, Berklee College of Music, and The New England Conservatory. Born in Brooklyn, NY and a graduate of Boston University, Mr. Feldman's teachers have included, Joseph Emonts, Claus Adam, Lorne Monroe, John Sant'Ambrogio, and Harvey Shapiro. In September 2001, Mr. Feldman joined the faculty of Williams College as Artist in Residence and Director of the Berkshire Symphony, ending a distinguished career with the Boston Symphony Orchestra. In 2012, he was appointed the music director of the Longwood Symphony Orchestra.



Simone Dinnerstein, piano

American pianist Simone Dinnerstein is a searching and inventive artist who is motivated by a desire to find the musical core of every work she approaches. *NPR* reports, "She compels the listener to follow her in a journey of discovery filled with unscheduled detours . . . She's actively listening to every note she plays, and the result is a wonderfully expressive interpretation." The New York-based pianist gained an international following because of the remarkable success of her recording of Bach's *Goldberg Variations*, which she raised the funds to record. Released in 2007 on Telarc, it ranked No. 1 on the U.S. Billboard Classical Chart in its first week of sales and was named to many "Best of 2007" lists including those of *The New York Times*, *The Los Angeles Times*, and *The New Yorker*.

The four solo albums Ms. Dinnerstein has released since then – *The Berlin Concert* (Telarc), *Bach: A Strange Beauty* (Sony), *Something Almost Being Said* (Sony), and *Bach: Inventions & Sinfonias* (Sony) – have also topped the classical charts. Ms. Dinnerstein was the bestselling instrumentalist of 2011 on the U.S. Billboard Classical Chart and was included in *NPR*'s 2011 100 Favorite Songs from all genres. In spring 2013, Simone Dinnerstein and singer-songwriter Tift Merritt released an album together on Sony called *Night*, a unique collaboration uniting classical, folk, and rock worlds, exploring common terrain and uncovering new musical landscapes. Dinnerstein was among the top ten bestselling artists of 2014 on the Billboard Classical Chart.

In February 2015, Sony Classical released Ms. Dinnerstein's newest album *Broadway-Lafayette*, which celebrates the time-honored transatlantic link between France and America and includes Ravel's *Piano Concerto in G Major*, Gershwin's *Rhapsody in Blue* and Philip Lasser's *The Circle and the Child: Concerto for Piano and Orchestra*, written for Ms. Dinnerstein. The album was recorded with conductor Kristjan Järvi and the MDR Leipzig Radio Symphony Orchestra by Grammy-winning producer Adam Abeshouse.

Ms. Dinnerstein's performance schedule has taken her around the world since her triumphant New York recital debut at Carnegie Hall's Weill Recital Hall in 2005 to venues including the Kennedy Center for the Performing Arts, Vienna Konzerthaus, Berlin Philharmonie, Metropolitan Museum of Art, and London's Wigmore Hall; festivals that include the Lincoln Center Mostly Mozart Festival, the Aspen, Verbier, and Ravinia festivals, and the Stuttgart Bach Festival; and performances with the Frankfurt Radio Symphony Orchestra, Vienna Symphony Orchestra, Dresden Philharmonic, Staatskapelle Berlin, Royal Scottish National Orchestra, Czech Philharmonic, New York Philharmonic, Minnesota Orchestra, Atlanta Symphony, Baltimore Symphony, Orchestra of St. Luke's, Kristjan Järvi's Absolute Ensemble, Montreal Symphony Orchestra, Calgary Philharmonic Orchestra, Danish National Symphony Orchestra, and the Tokyo Symphony.

Ms. Dinnerstein has played concerts throughout the U.S. for the Piatigorsky Foundation, an organization dedicated to bringing classical music to non-traditional venues. She gave the first classical music performance in the Louisiana state prison system when she played at the Avoyelles Correctional Center, and performed at the Maryland Correctional Institution for Women in a concert organized by the Baltimore Symphony Orchestra. Dedicated to her community, in 2009 Ms. Dinnerstein founded Neighborhood Classics, a concert series open to the public hosted by New York public schools which raises funds for the schools.

Ms. Dinnerstein is a graduate of The Juilliard School where she was a student of Peter Serkin. She also studied with Solomon Mikowsky at the Manhattan School of Music and in London with Maria Curcio. Simone Dinnerstein lives in Brooklyn, New York with her husband and son. She is managed by Ekonomisk Mgmt and is a Sony Classical artist.

Special thanks to:

Thanks to the Department of Music and Custodial staff; Jonathan Myers, Concert and Event Manager; Harry Van Baaren, poster design; and Dan Czernecki, recording engineer for assisting with tonight's performance.